

PALLADIUM DOOR

REMOVABLE EDGE REPLACEMENT PROCEDURE

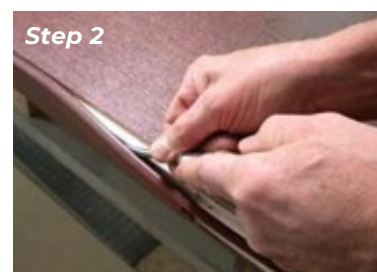
There is no requirement to take the door down if replacing vinyl cladding on the lock edge. The door must be taken down to replace steel cladding or vinyl cladding on the hinge edge.

Vinyl Edges:

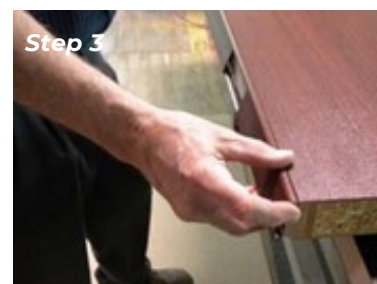
Step 1: Remove any hardware that will interfere with the removal or replacement of the edge. Begin removing the original vinyl edge by inserting a small flat blade screwdriver between the door edge and vinyl cladding at the top or bottom of the door, removing the return leg of the vinyl from the door kerf.



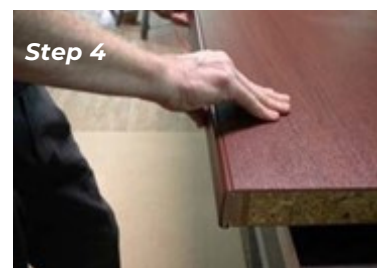
Step 2: From this point, slide the screwdriver down the length of the door on the wide face, releasing the return leg over the entire door length. Detach the vinyl from the door by lifting it from the return groove on the narrow face.



Step 3: Begin attachment of the replacement edge by engaging the return leg of the narrow face into the door kerf. (Note: the replacement vinyl cladding is provided with tape in both edges of the profile. This tape insures proper fit and aids in the impact resistance of the edge and should not to be removed). To insure proper position, align the vinyl edge to the top end of the door before finishing the installation.



Step 4: Beginning at the top end, flex the vinyl edge and apply pressure to start engagement of the return leg of the vinyl edge into the door kerf. From this end, work down the length of the door engaging the return leg of the vinyl edge into the door kerf until the entire edge is engaged. Reattach any hardware removed in step 1.



PALLADIUM DOOR

REMOVABLE EDGE REPLACEMENT PROCEDURE

Stainless Steel Edges:

Step 1: Remove any hardware that will interfere with the removal or replacement of the edge. Begin by removing the original stainless steel edge by sliding it off from one end of the door. Tapping the end of the steel edge with a wood block may assist in getting it started.



Step 2: A strip of tape should remain attached to the edge of the door on both the wide and narrow faces. This tape insures proper fit and aids in the impact resistance of the edge and should not be removed.



Step 3: Begin attachment of the replacement edge by compressing the tape at one end of the door and sliding the replacement edge over it.



Step 4: Continue sliding the edge onto the door until it is properly aligned with the ends of the door. Reattach any hardware removed in step 1.

