



VT ARCHITECTURAL WOOD DOORS

PRINCIPLE BENEFITS AND FEATURES OF THIS CONSTRUCTION

- Lead-free
- Available with a 45-min fire rating
- LEED® MR4 - Recycled Content, EQ4.4 No Added Urea-Formaldehyde

ENGINEERING SPECIFICATIONS

Sizes: Min. 2'-0" x 6'-0", Max. 4'-0" x 8'-0"

Thickness: 1-3/4"

Frame: Tested in grouted steel frame, must be installed in frame that will maintain the acoustical rating

Stiles: Meets WDMA Extra Heavy Duty I.S. 1A Performance Level

Faces: Wood Veneers, MDO, High-Pressure Decorative Laminate, Vinyl

Latching Hardware: Single Point Latch

Hinges: Level Swing - Butt Hinges

LEED® Contributions: MR4 - Recycled Content, EQ4.4 - No Added Urea-Formaldehyde

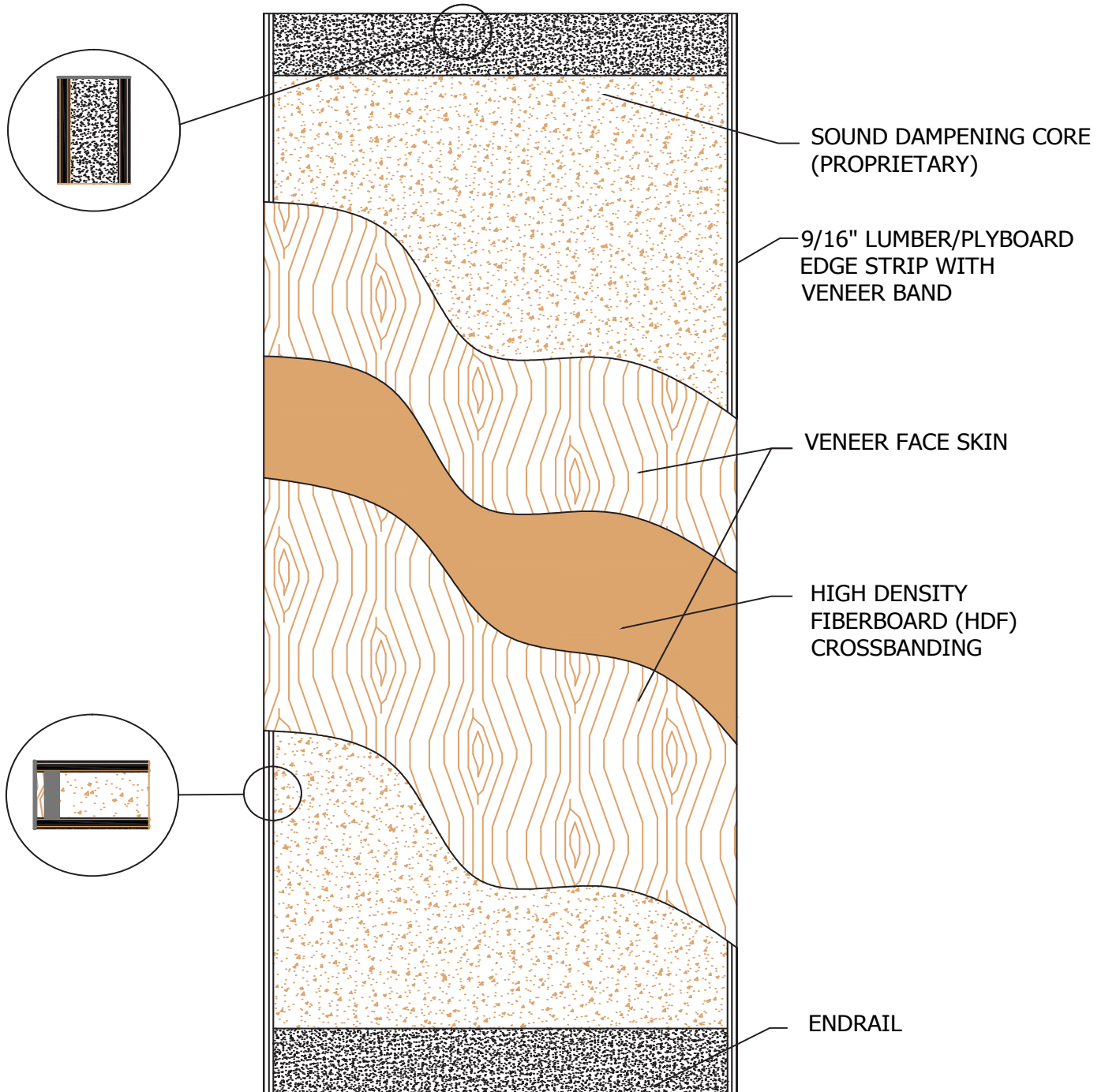
Standards: ASTM E90, E413

SINGLE SWING FLUSH DOORS	STC 38	STC 39		STC 40
Fire-Rating	45-Min			
Lites	N/A	VP: 110-D2 Fire-Rated (center) & 1/4" Laminated (outer) 100 sq. in. max	N/A	VP: 110-D2 Fire-Rated (center) & 1/4" Laminated (outer) 100 sq. in. max
Gasket Systems	U		S or T	
Test Report	E1460.04-113-11-R0 C7672.02J-113-17-R0	E1460.04-113-11-R0 C7672.02H-113-17-R0	E1460.04-113-11-R0 C7672.02I-113-17-R0	E1460.04-113-11-R0 C7672.02G-113-17-R0
Weight Per Square Foot	7.6 lbs.			

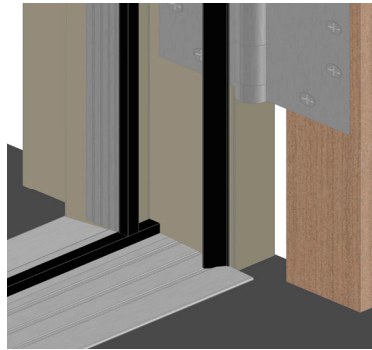
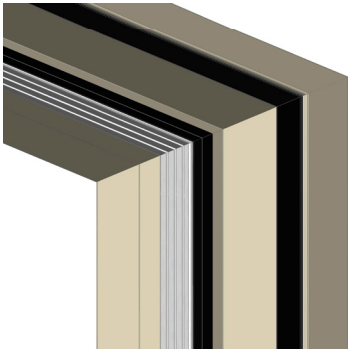
PERFORMANCE DESCRIPTION

STC RATING	WHAT CAN BE HEARD THROUGH THE DOOR
20-25	Very poor - Low speech audible
25-30	Poor - Normal speech understood easily and distinctly
30-35	Fair - Loud speech understood fairly well
35-40	Good - Loud speech heard but hardly intelligible, this is the onset of acoustic "privacy"
40-50	Very Good - Loud speech heard faintly, 90% of a typical group sample not annoyed
50-52	Excellent - Loud sounds heard faintly or not at all, 99% of a typical group sample not annoyed

DOOR ELEVATION - STC 38, 39 SG7

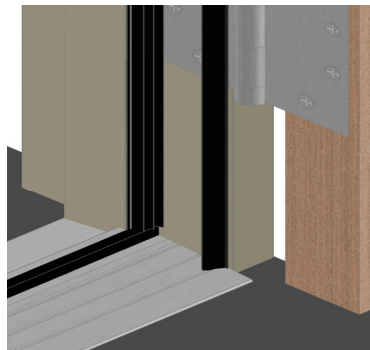
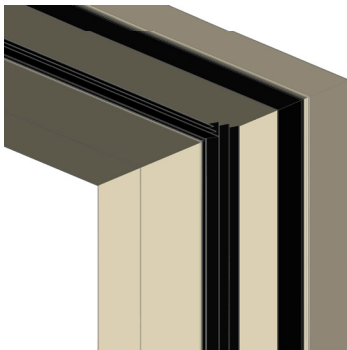


GASKETING SYSTEMS



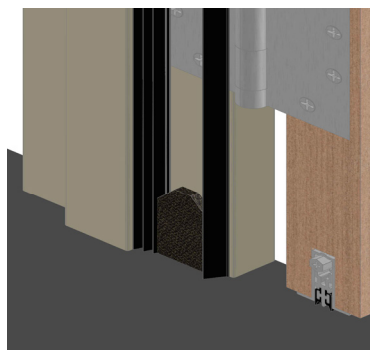
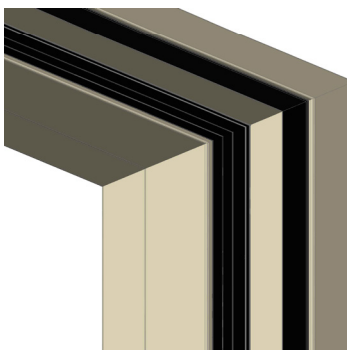
Gasket System S

- Pemko 2008STCxQ380 raised threshold
- Pemko S44 adhesive gasketing
- Pemko 312_R perimeter gasketing
- Required Undercut - 3/8"



Gasket System T

- Pemko 2008STCxQ380 raised threshold
- Pemko S773 adhesive gasketing
- Pemko S44 gasketing
- Required Undercut - 3/8"



Gasket System U

- Pemko PDB411 automatic door bottom
- Pemko S773 adhesive gasketing
- Pemko S44 adhesive gasketing
- Pemko ACP112 acoustic corner pad
- Required Undercut - 3/8" (1/4" - 1/2")