



VT ARCHITECTURAL WOOD DOORS

PRINCIPLE BENEFITS AND FEATURES OF THIS CONSTRUCTION

- Nominal weight is 10.5 psf
- Includes 1/16" total lead thickness which provides x-ray protection as well as sound reduction
- Meets LEED® EQ 4.4 - Low-Emitting Materials, No Added Urea Formaldehyde Resins

ENGINEERING SPECIFICATIONS

Sizes: Min. 2'-0" x 6'-0", Max. 4'-0" x 8'-0"

Thickness: 1-3/4"

Frame: Tested in grouted steel frame, must be installed in frame that will maintain the acoustical rating

Stiles: Meets WDMA Extra Heavy Duty I.S. 1A Performance Level

Faces: Wood Veneers, MDO, High-Pressure Decorative Laminate, Vinyl

Latching Hardware: Single Point Latch

Hinges: Level Swing - Butt Hinges

LEED® Contributions: MR4 - Recycled Content, EQ4.4 - No Added Urea-Formaldehyde

Standards: ASTM E90, E413

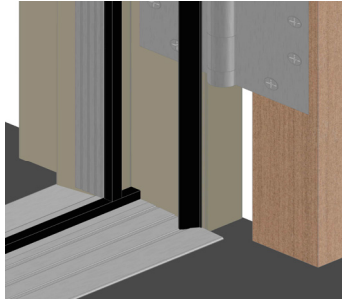
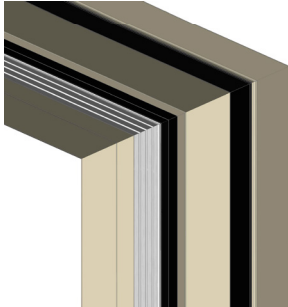
SINGLE SWING FLUSH DOORS	STC 46-48		STC 49
Fire-Rating	N/A		
Lites	N/A		
Gasket Systems	S or T	U	S or T
Test Report	1460.03-113-11-R0 C7672.03A	1460.03-113-11-R0 C7672.03B	1460.03-113-11-R0 C7672.03A
Weight Per Square Foot	10.5 lbs.		

PERFORMANCE DESCRIPTION

STC RATING	WHAT CAN BE HEARD THROUGH THE DOOR
20-25	Very poor - Low speech audible
25-30	Poor - Normal speech understood easily and distinctly
30-35	Fair - Loud speech understood fairly well
35-40	Good - Loud speech heard but hardly intelligible, this is the onset of acoustic "privacy"
40-50	Very Good - Loud speech heard faintly, 90% of a typical group sample not annoyed
50-52	Excellent - Loud sounds heard faintly or not at all, 99% of a typical group sample not annoyed

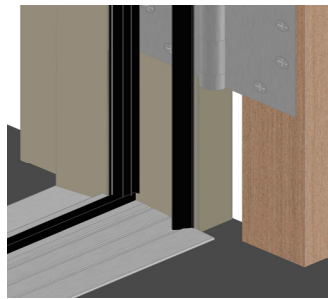
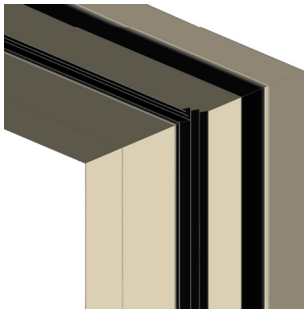


GASKETING SYSTEMS



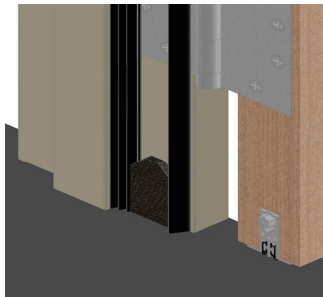
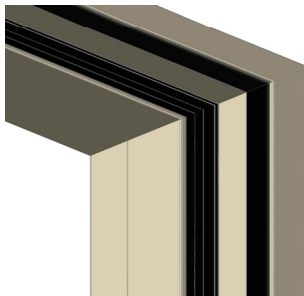
Gasket System S

- Pemko 2008STCxQ380 raised threshold
- Pemko S44 adhesive gasketing
- Pemko 312_R perimeter gasketing
- Required Undercut - 3/8"



Gasket System T

- Pemko 2008STCxQ380 raised threshold
- Pemko S773 adhesive gasketing
- Pemko S44 gasketing
- Required Undercut - 3/8"



Gasket System U

- Pemko PDB411 automatic door bottom
- Pemko S773 adhesive gasketing
- Pemko S44 adhesive gasketing
- Pemko ACP112 acoustic corner pad
- Required Undercut - 3/8" (1/4" - 1/2")