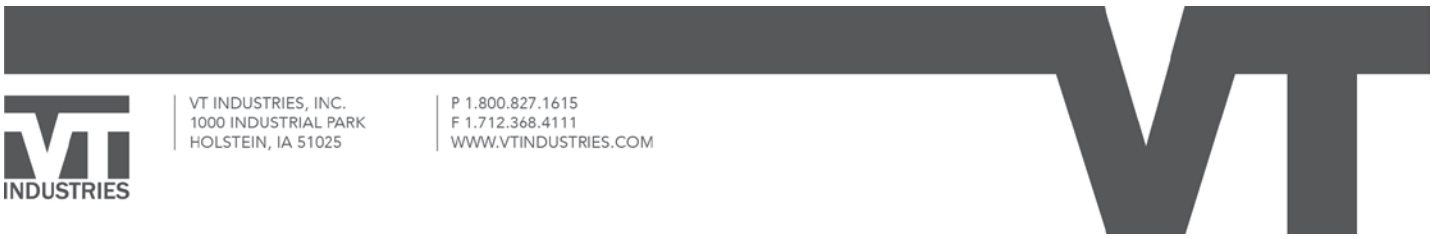




VT INDUSTRIES, INC.  
1000 INDUSTRIAL PARK  
HOLSTEIN, IA 51025

P 1.800.827.1615  
F 1.712.368.4111  
WWW.VTINDUSTRIES.COM



## Important Production Notice Regarding Laminate Selection

Dear Valued Customer.

We take pride in serving you to the best of our abilities while providing you with the highest quality products and customer service. Because of our commitment to providing you with top-of-the-line products, we have made some recent changes regarding some laminate offerings that may affect you.

Due to technical difficulties resulting in a less than desired outcome, VT Industries will no longer produce any tops with the **Wilsonart 4830 Satin Stainless** pattern regardless of edge profile selection. VT is also unable to offer **Wilsonart's 4925 Calcutta Marble in the Ora edge**.

The laminate manufacturer is aware of the issues and is working to resolve them as quickly as possible. We've also created a checkpoint in our ordering system that will flag any order pertaining to these circumstances and allow your customer service representative to reach out to you directly with a resolution.

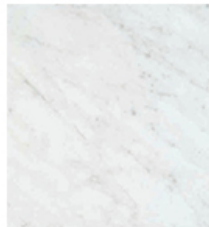
To achieve ultimate results we ask that you consider some of the alternatives to the two discontinued patterns we've listed below.

We sincerely thank you for your dedicated business over the years and we're excited to continue to grow together throughout the remainder of 2018. If you have any questions regarding this notice, please feel free to reach out to your customer service representative for more information.

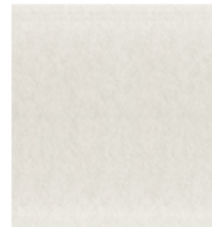
### Laminate Alternatives



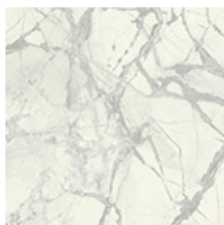
White Marble  
Herringbone 9310



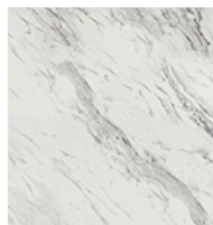
White Carrara  
4924



Lunar Frost  
1849



Cote d'Azur  
1886



Calacutta Marble  
3460



Misted Zephyr  
4843