



Product Update

AUG 15, 2023

#P256

Revision 02

LITE / LOCK CUTOUT MARGINS ON FLUSH DOORS

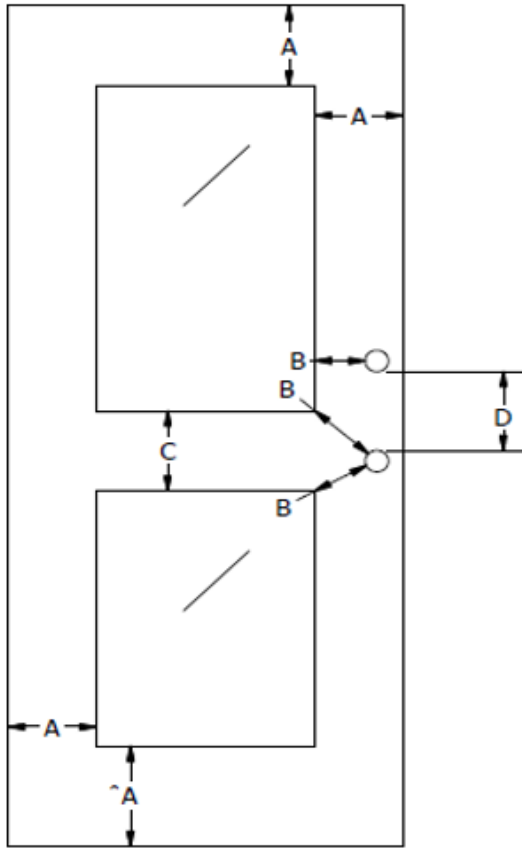
		(A) MINIMUM STILE OR RAIL WIDTH DIMENSION ¹	(B) MINIMUM LITE TO LOCK DIMENSION	(C) MINIMUM LITE TO LITE DIMENSION	(D) MINIMUM LOCK TO LOCK DIMENSION
PARTICLEBOARD CORE (PC)	NON-RATED/ 20 MINUTE	5"	3-5/16"	3-5/16"	3-5/16"
AGRIFIBER CORE (WSPC)	NON-RATED/ 20 MINUTE	4"*	3-5/16"	3-5/16"	3-5/16"
STRUCTURAL COMPOSITE LUMBER CORE (SCLC)	NON-RATED	3"*	1-1/2"	1-1/2"	1-1/2"
STRUCTURAL COMPOSITE LUMBER CORE (SCLC)	20-MINUTE	5"	1-1/2"	1-1/2"	1-1/2"
AGRIFIBER CORE (WSPC)	45-MINUTE	4"*	4"	4"	4"
STRUCTURAL COMPOSITE LUMBER CORE (SCLC) – HOLSTEIN FACILITY	45-MINUTE	5"	5"	5"	5"
FIRE COMPOSITE CORE (FD) – NEENAH FACILITY	45/60/90-MIN	5"	3-1/2"	5"	3-1/2"
FIRE COMPOSITE CORE (FD) – HOLSTEIN FACILITY	45/60/90-MIN	5"	5"	5"	5"
PARTICLEBOARD CORE (PC) – NEENAH FACILITY	45-MINUTE	5-1/2"	5-1/2"	5-1/2"	5-1/2"
ACOUSTIC CORE (STC)	NON-RATED / 20-MINUTE	5"	3-5/16"	3-5/16"	3-5/16"
ACOUSTIC CORE (STC)	45-MINUTE	5"	5"	5"	5"
ACOUSTIC CORE (STC)	60-MINUTE	5"	5"	5"	5"
BULLET RESISTANT CORE (BR)	NON-RATED	5"	1-1/2"	1-1/2"	1-1/2"

¹ ALLOWED STILE/RAIL WIDTHS SUBJECT TO CHANGE BASED ON ACTUAL HARDWARE PREPS REQUIRED.

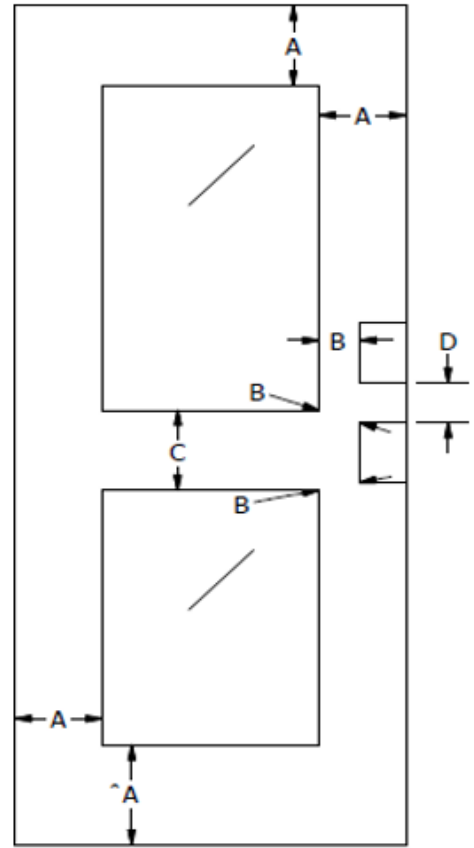
*DOORS WITH STILE / RAIL DIMENSIONS LESS THAN 5" WILL BE EXEMPT FROM WARRANTY AND SUBJECT FURTHER VT ENGINEERING REVIEW.



Product Update



CYLINDRICAL LOCKS



MORTISE LOCKS