

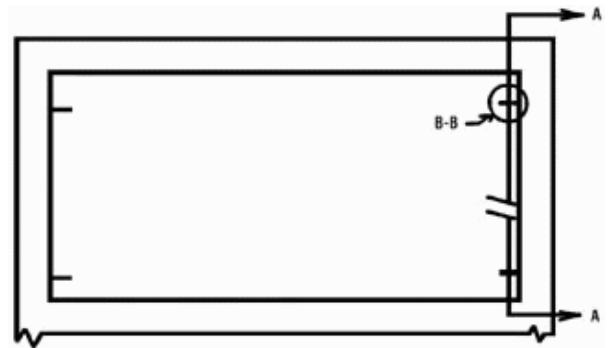


TRANSOM NOTES

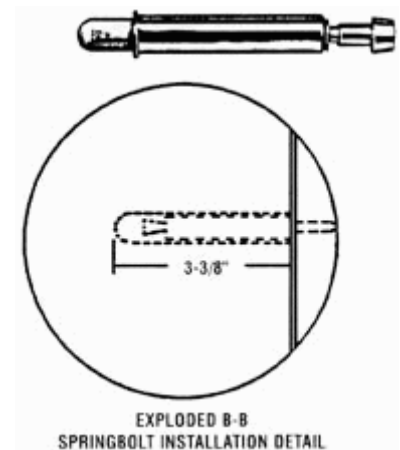
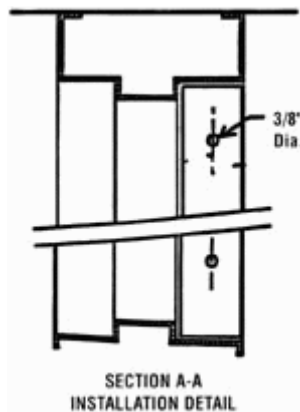
Heritage Collection - Flush

Springbolts for fire rated transoms will be supplied by VT. Springbolts for transoms & side panels shall be placed 3" (76 mm) from each corner with the minimum number centered on each side as follows:

- Panels under 12" (305 mm) in height
Contact factory for bolt locations
- Panels up to 18" (457 mm) in height
2 spring bolts per side
- Panels up to 36" (914 mm) in height
3 spring bolts per side
- Panels up to 48" (1219 mm) in height
4 spring bolts per side
- Side panels over 48" (1219 mm) in height
18" on center (457 mm)



Transom Springbolt Placement Detail



- Transom match not guaranteed with a combined height exceeding 10 ft.
- Advise rabbet size (such as 1/2", 5/8", or 3/4") on your order.

ACCEPTABLE TRANSOM APPLICATIONS FOR HERITAGE FLUSH WOOD DOORS

MEETING RAILS	20-MINUTE NEUTRAL	20-MINUTE POSITIVE	45-MINUTE NEUTRAL	45-MINUTE POSITIVE	60-MINUTE NEUTRAL	60-MINUTE POSITIVE	90-MINUTE NEUTRAL	90-MINUTE POSITIVE
Square with No Transom Bar	1, 5, 6	N/A	1, 4, 5, 11	N/A	1, 4, 5, 11	N/A	1, 4, 5, 11	N/A
Square with Transom Bar	5, 6	5, 7, 10	2, 5, 7, 10	8, 9, 10	2, 5, 7, 10	8, 9, 10	2, 5, 7, 10	8, 9, 10
Rabbetted	3, 4, 5, 11	N/A	2, 4, 5, 11	N/A	2, 4, 5, 11	N/A	2, 4, 5, 11	N/A

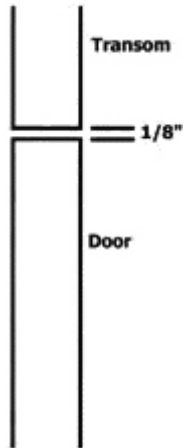
1. Door Transom Astragal (DTA) required
2. Metal meeting edge & astragal required.
3. 5-Ply Door required.
4. 5" Firestop™ meeting rails required.
5. Maximum single opening size 4-0 x 10-0; maximum transom size 4-0 x 3-4.
6. Maximum paired opening size 8-0 x 10-0; maximum transom size 8-0 x 3-4.
7. Maximum paired opening size 8-0 x 10-0; maximum transom size 4-0 x 3-4
8. Maximum paired opening size 8-0 x 9-0; maximum transom size 4-0 x 3-4
9. Maximum single opening size 4-0 x 9-0; maximum transom size 4-0 x 3-4
- 10 Transoms over a pair must be separated by a fixed mullion, limiting the width of each panel to the width of each leaf of the pair.
- 11 Single swing only - no pairs

Maximum sizes noted dependent upon hardware.

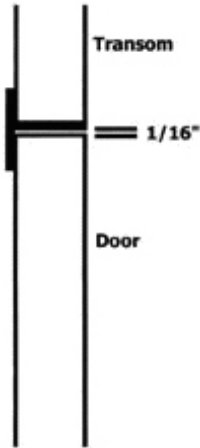
On coordinated orders, state whether bottom of transom must be wood taped.

TRANSOM PROFILES

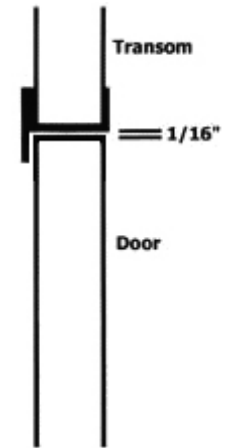
Heritage Flush



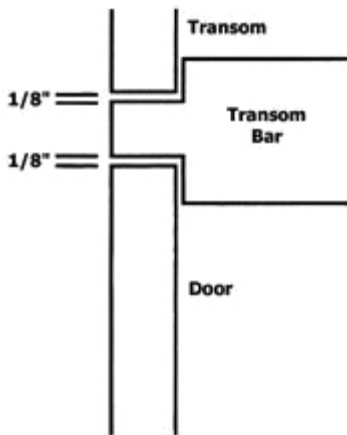
Square Transom for
Non Rated only



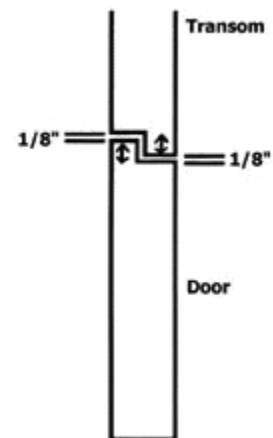
Square Transom with DTA
20-Minute Fire Rating
for Neutral Pressure only



Square Transom with #204
for Neutral Pressure Only



Square Transom with Fixed Bar
for 20-90 minute Positive Pressure



Rabbeted Transom
Advise Rabt Dimension _____
For Neutral Pressure and Non Rated
Only



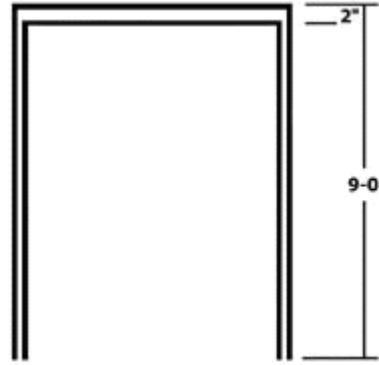
FIGURING TRANSOM DIMENSIONS

Heritage Collection – Flush

SQUARE BOTTOM TRANSOM

No Bar in Frame

Overall height	9-0	
Door height	- 7-0	
	2-0	
Frame header	- 0-2	
	1-10	
Top clearance	- 1/8"	
Net Transom Height	1-9 7/8"	



Nominal door height	7-0	
Top clearance	- 1/8"	
	6-11 7/8"	
Undercut	- 1/2"	
Net Transom Height	6-11 3/8"	

RABBETED TRANSOM

(Example: 1/2" Rabbeted)

Overall height	9-0	
Door height	- 7-0	
	2-0	
Frame header	- 0-2	
	1-10	
Top clearance	- 1/8"	
	1-9 7/8"	
Rabbeted dimension	+ 1/2"	
Net Transom Height	1-10 3/8"	

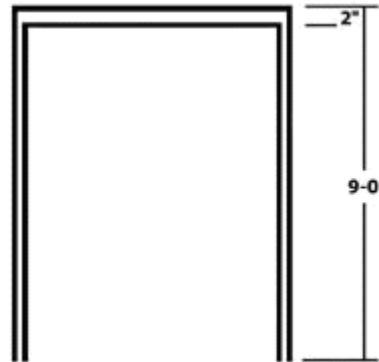


Figure **Net Door Height** as demonstrated previously.



SQUARE BOTTOM TRANSOM
Fixed Bar Between Door & Transom

Overall height	9-0	
Door height	- 7-0	
		<hr/>
		2-0
Frame header	- 0-2	
		<hr/>
		1-10
Bar thickness	- 0-2	
		<hr/>
		1-8
Top clearance	- 1/8"	
		<hr/>
		1-7 7/8"
Bottom clearance	- 1/8"	
		<hr/>
Net Transom Height	1-7	3/4"

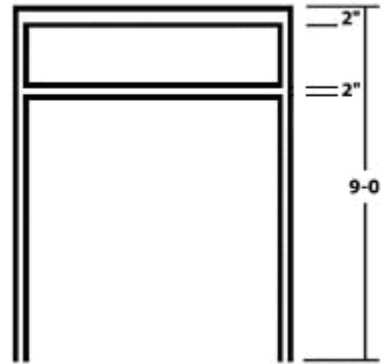


Figure **Net Door Height** as demonstrated previously.

SQUARE TRANSOM
with #217 astragal set

Overall height	9-0	
Door height	- 7-0	
		<hr/>
		2-0
Frame header	- 0-2	
		<hr/>
		1-10
Top clearance	- 1/8"	
		<hr/>
		1-9 7/8"
Bottom clearance	- 1/8"	
		<hr/>
Net Transom Height	1-9	3/4"

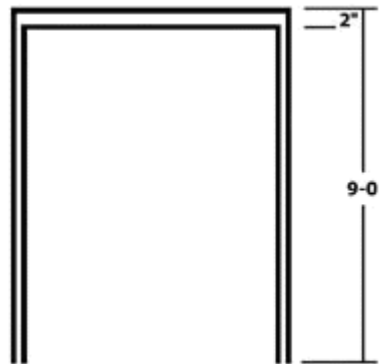


Figure **Net Door Height** as demonstrated previously.