

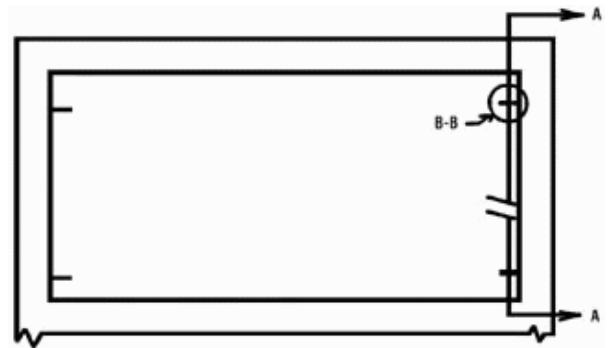


## TRANSOM NOTES

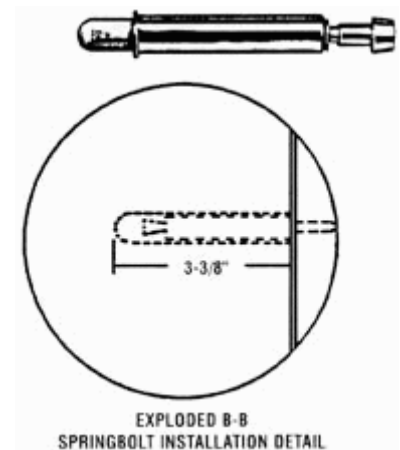
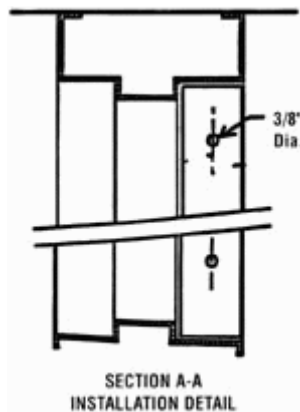
Heritage Collection - Flush

Springbolts for fire rated transoms will be supplied by VT. Springbolts for transoms & side panels shall be placed 3" (76 mm) from each corner with the minimum number centered on each side as follows:

- Panels under 12" (305 mm) in height  
Contact factory for bolt locations
- Panels up to 18" (457 mm) in height  
2 spring bolts per side
- Panels up to 36" (914 mm) in height  
3 spring bolts per side
- Panels up to 48" (1219 mm) in height  
4 spring bolts per side
- Side panels over 48" (1219 mm) in height  
18" on center (457 mm)



### Transom Springbolt Placement Detail



- Transom match not guaranteed with a combined height exceeding 10 ft.
- Advise rabbet size (such as 1/2", 5/8", or 3/4") on your order.