



Product Update

MAY 16, 2003

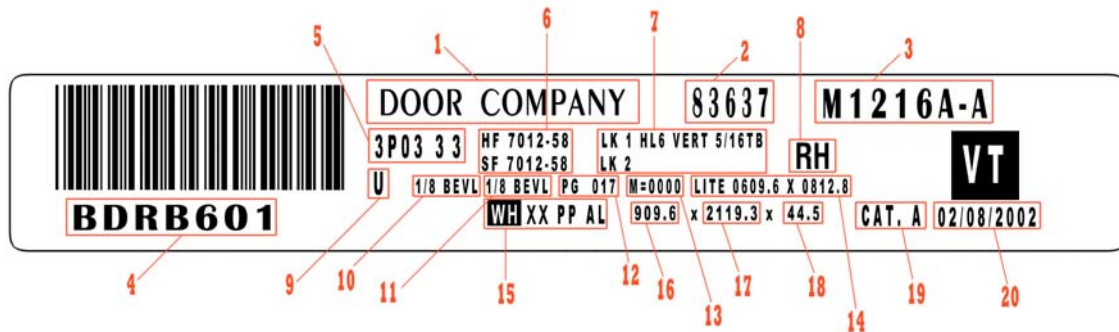
#P107FSR

Revision 03

Applies to Flush and Stile & Rail doors

READING VT DOOR LABELS

When referring to a door supplied by VT, it is best to look at the top rail of the door for a permanently affixed adhesive label, which will provide all necessary information for that particular door. In our ongoing effort to provide more complete information, some changes have been made to our door label as illustrated below.



- 1 - Job Name
 - * 2 - Shop Order Number
 - * 3 - Door Number
 - * 4 - Bar Code Serial Number
 - 5 - VT Door Type
 - 6 - Face Material by color code (HF = hinge face; SF = stop face)
 - 7 - Lock Type
 - 8 - Swing of the door
 - 9 - Pair Indicator (P = sequence-matched single doors or door/transom combinations; A = active leaf of single egress pair; I = inactive leaf of single egress pair; D = double egress pair; U = unequal pair; S = sliding doors; B = bi-fold doors)
 - 10 - Bevel Code on the hinge stile
 - 11 - Bevel Code on the lock stile
 - 12 - Page Number on production drawings
 - 13 - Sequence matching
 - 14 - Lite Cutout in millimeters (width x height)
 - 15 - Fire Rating information. 'WH' = Warnock Hersey. Fire ratings indicated in Roman numerals, XX = 20-minute, VL = 45-minute, LX = 60-minute, and XC = 90-minute. 'PP' indicates positive pressure; 'HM' or 'AL' (frame material on positive pressure doors).
 - 16 - Door Width in millimeters
 - 17 - Door Height in millimeters
 - 18 - Door Thickness in millimeters
 - 19 - Indicates Category A compliance under UBC 7-2-1997
 - 20 - Ship Date
- When contacting the factory, refer to either Items 2 (shop order number) and 3 (door number) together; or Item 4 (bar code serial number).