

- Doors meet WDMA I.S. 6-A custom grade quality standards
- Core is MDF
- Faces are 1/8" HDF
- Stiles are 1-3/4" thick Structural Composite Lumber (SCL) with a 3/8" HDF outer edge
- Rails are 1-3/4" thick Structural Composite Lumber (SCL)
- Factory machined to exact requirements for hardware, including pre-drilled pilot holes for hinges and faceplates

**FIRE DOORS** (Refer to our Web site for the latest fire ratings.)

**20-Minute Fire Doors**

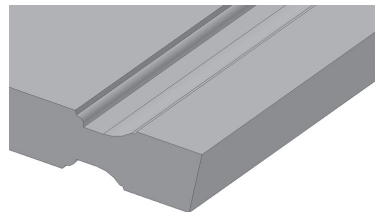
- Maximum opening size 4'-0" x 8'-0" x 1-3/4", single
- Maximum opening size 8'-0" x 8'-0" x 1-3/4", pair with 3- or 4-point latching; 4'-0" maximum door width
- Cylindrical, mortise lock or surface exit device
- Flushbolts: automatic or extension, 24" max length
- Hinges per NFPA 80

**FACTORY FINISH**

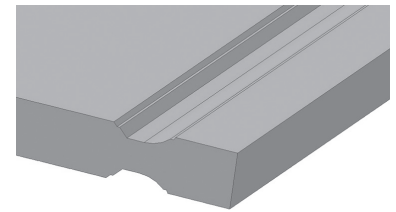
- Doors are available with a primed finish.

**PROFILE OPTIONS**

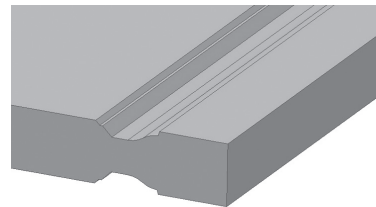
- VT 2, 3 or 4 available



VT 2 Profile



VT 3 Profile



VT 4 Profile

**DIMENSIONS (Maximum and Minimum)**

Rating	Door Height		Door Width		Door Thickness		Stile Width	
Non-Rated	10'-0" max	5'-0" min	4'-0" max	1'-6" min	1-3/4" max	1-3/8" min	10" max	4" min
20-Minute	8'-0" max	5'-0" min	4'-0" max	1'-6" min	1-3/4" max	1-3/4" min	10" max	5" min
	Top Rail Width		Cross/Lock Rail Width		Bottom Rail Width		Panel Height	
Non-Rated	10" max	4" min	10" max	3" min	10" max	4" min	9'-6" max	6" min
20-Minute	10" max	5" min	10" max	3" min	10" max	10" min	6'-9" max	6" min
	Panel Width		Raised Panel Thickness		Vertical Mullion Width			
Non-Rated	3'-5" max	6" min	1-3/8" max, min		10" max	3" min		
20-Minute	3'-2" max	6" min	1-3/4" max, min		10" max	3" min		